



3 Lever Mortice Lock

- For wooden doors hinged on the left or right, requiring key and lever handle operation
- Locked and opened from either side of door.
- Accepts bolt through furniture
- Complete with two keys (we can cut you more)
- Made in U.K.

Product Title	Code
Mortice Lock Polished Brass 50mm Case - 32mm Backset	LB010010
Union Mortice Lock Polished Brass 100mm case - 82.5mm Backset	LB010070
Union Mortice Lock Polished Brass 63mm case - 44.5mm Backset	LB010030
Union Mortice Lock Polished Brass 75mm case - 57mm	LB010050
Union Mortice Lock Satin Chrome 100mm case - 82.5mm Backset	LB010080
Union Mortice Lock Satin Chrome 50mm - 32mm Backset	LB010020
Union Mortice Lock Satin Chrome 63mm case - 44.5mm	LB010040
Union Mortice lock Satin Chrome 75mm case - 57mm	LB010060

5 Lever BS3621:2004 Mortice Lock

- British Standard and Secured by Design certified
- 20mm extra deadbolt for secure deadlocking
- Reversible Latchbolt for left or right handed doors (Sashlock only)
- Anti-pick and Secure box striking plate
- Complete with three keys (we can cut you more on-site)

Recommended by police and insurance companies for use on front entrance doors.

Product Title	Code
Union Satin Chrome BS3621:2004 Mortice Deadlock 67mm Case - 44mm Backset	LB011250
Union Polished Brass BS3621 Mortice Lock 80mm-57mm Backset	LB011260
Union Polished Brass BS3621 Mortice Lock 67mm - 44mm Backset	LB011280
Union Polished Brass BS3621:2004 Mortice Deadlock 67mm Case - 44mm Backset	LB011255
Union Polished Brass BS3621:2004 Mortice Lock 80mm case - 57mm Backset	LB011310
Union Satin Chrome BS3621 Mortice Lock 80mm-57mm Backset	LB011270
Union Satin Chrome BS3621:2004 Mortice Lock 80mm case - 57mm backset	LB011320

Cylinder Mortice Lock Case and Striking Plate

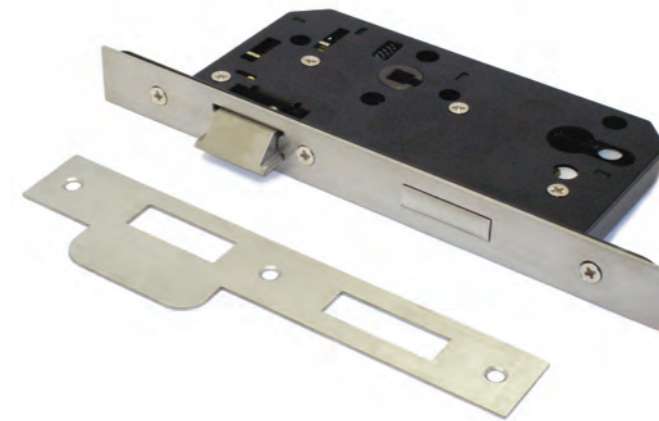
- For wooden doors hinged on the left or right, requiring key and lever handle/knob operation
- Made in the UK
- Accepts bolt through furniture
- Euro and Oval profile available.

Product Title	Code
Polished Brass Euro cylinder mortice deadlock case 63mm - 44.5mm backset	LB030300
Polished Brass Euro cylinder mortice deadlock case 75mm - 57mm backset	LB030020
Polished Brass oval cylinder mortice deadlock case 63mm - 44.5mm backset	LB030030
Polished Brass oval cylinder mortice deadlock case 75mm - 57mm backset	LB030050
Satin Chrome Euro cylinder mortice deadlock case 63mm - 44.5mm backset	LB030410
Satin Chrome Euro cylinder mortice deadlock case 75mm - 57mm backset	LB030310
Satin Chrome oval cylinder mortice deadlock case 63mm - 44.5mm backset	LB030080
Satin Chrome oval cylinder mortice deadlock case 75mm - 57mm backset	LB030060
Union Euro cylinder Mortice Lock Case Polished Brass 63mm	LB030420
Union Euro cylinder Mortice Lock Case Polished Brass 75mm	LB030190
Union Euro cylinder Mortice Lock Case Satin Chrome 63mm	LB030180
Union Euro cylinder Mortice Lock Case Satin Chrome 75mm	LB030540

Contract Cylinder Sashlock Case

- Suitable for both sprung and hollow unsprung door furniture.
- Easily Reversible
- Solid Brass Deadbolt
- Accepts bolt through furniture
- 8mm follower
- Available with straight or radius forend and striking plates (please specify)

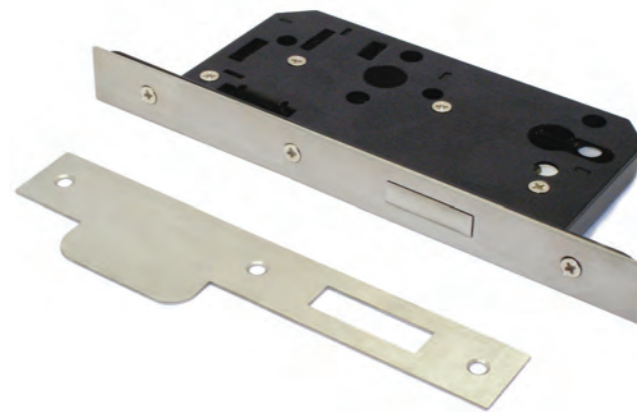
Product Title	Code
Polished Brass 63mm - Case 44mm - Backset Euro Deadlock Case	LH010720
Polished Brass 63mm - Case 44mm - Backset Oval Sashlock Case	LH010570
Polished Brass 75mm - Case 57mm - Backset Euro Deadlock Case	LH010740
Polished Brass 75mm - Case 57mm - Backset Oval Sashlock Case	LH010540
Satin Chrome 63mm - Case 44mm - Backset Euro Deadlock Case	LH010730
Satin Chrome 63mm - Case 44mm - Backset Oval Sashlock Case	LH010580
Satin Chrome 75mm - Case 57mm - Backset Euro Deadlock Case	LH010750
Satin Chrome 75mm - Case 57mm - Backset Oval Sashlock Case	LH010590
Polished Brass 63mm - Case 44mm - Backset Euro Sashlock	LH010600
Satin Chrome 63mm - Case 44mm - Backset Euro Sashlock Case	LH010610
Polished Brass 75mm - Case 57mm - Backset Euro Sashlock	LH010620
Satin Chrome 75mm - Case 57mm - Backset Euro Sashlock Case	LH010630



DIN Style Modular Euro profile Mortice Sashlock

- Conforms to BS 12209 & dimensions satisfy recommendations set in Part M and BS8300.
 - Operated from either side of the door, latch also withdrawn by cylinder key.
 - Stainless steel bolt and latch.
 - Easily Reversible.
 - Double throw 20mm projection deadbolt.
 - Accepts bolt through furniture
 - 72mm Centres - 55mm Backset.
- Available finishes: Stainless Steel & Polished Brass (Polished brass POA)
Radius forend available.

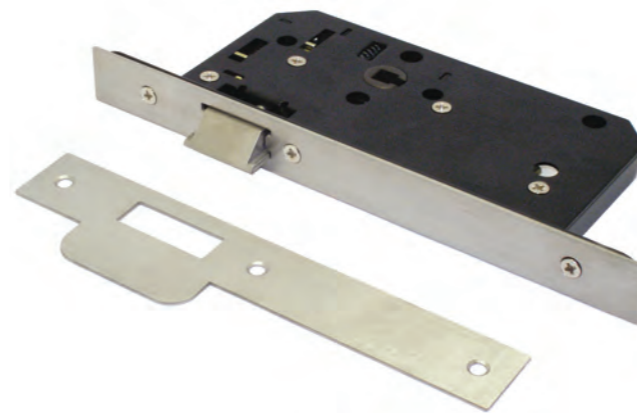
Product Title	Code
Polished Stainless Steel 55mm Backset Cylinder Sashlock Case - Square	LB040040
Satin Stainless Steel 55mm Backset Euro Cyl Lock Case 72mm - Square	LB040050



DIN Style Modular Euro profile Mortice Deadlock

- Conforms to BS 12209 & dimensions satisfy recommendations set in Part M and BS8300.
 - Locked by cylinder key or turn.
 - Stainless steel dead bolt.
 - Double throw 20mm projection deadbolt.
 - Accepts bolt through furniture
 - 5 Year Manufacturers Guarantee.
- Available finishes: Stainless Steel & Polished Brass (Polished brass POA)

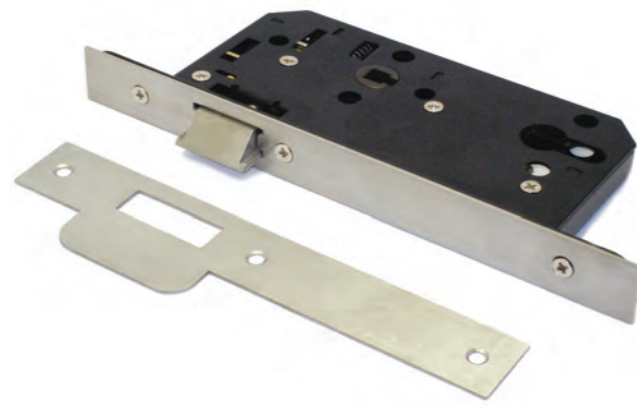
Product Title	Code
Polished Stainless Steel 55mm Backset Euro Cylinder Deadlock Case Square	LB040060
Satin Stainless Steel 55mm Backset Euro Cylinder Deadlock Case - Square	LB040070



DIN Style Modular Euro profile Mortice Latch

- Conforms to BS 12209 & dimensions satisfy recommendations set in Part M and BS8300.
 - Operated from either side of door by handle.
 - Stainless steel latch bolt.
 - Accepts bolt through furniture
 - 5 Year Manufacturers Guarantee.
- Available finishes: Stainless Steel & Polished Brass (Polished brass POA)

Product Title	Code
Polished Brass 55mm Backset Mortice Latch - Square	LB040080
Polished Stainless Steel 55mm Backset Mortice Latch - Square Plate	LB040090
Satin Stainless Steel 55mm Backset Mortice Latch - Square	LB040100



DIN Style Modular Euro profile Mortice Nightlatch

- Conforms to BS 12209 & dimensions satisfy recommendations set in Part M and BS8300.
- Operated from either side of the door, latch also withdrawn by cylinder key.
- Stainless steel bolt and latch.
- Easily Reversible.
- Accepts bolt through furniture
- 5 Year Manufacturers Guarantee.

Radius Plate available.

Product Title	Code
Polished S/S 55mm Backset Cylinder Mortice Night Latch Square	LB040120

DIN Style Modular Euro profile Mortice Escape Sashlock

- Conforms to BS 12209 & dimensions satisfy recommendations set in Part M and BS8300.
- Latch bolt withdrawn with lever handle or key from outside.
- Reversible Latchbolt for left or right handed doors
- Single throw 15mm projection deadbolt.
- Accepts bolt through furniture
- For use with sprung lever furniture with bolt through fixings (38mm centres) only.
- 55mm Backset

Product Title	Code
Polished Stainless Steel 55mm Backset Euro Cylinder - Square	LB040140
Satin Stainless Steel 55mm Backset Euro Cylinder - Square	LB040150

DIN Style Modular Euro profile Mortice Bathroom Lock

- Conforms to BS 12209 & dimensions satisfy recommendations set in Part M and BS8300.
 - Thumb-turn and handle operation from both sides of door.
 - Stainless steel bolt and latch.
 - Single throw 15mm projection deadbolt.
 - Reversible Latchbolt for left or right handed doors
 - Accepts bolt through furniture
- Available finishes: Stainless Steel & Polished Brass (Polished brass POA)

Product Title	Code
Polished Stainless Steel 55mm Backset Mortice Bathroom Lock - Square	LB040190
Satin Stainless Steel 55mm Backset Mortice Bathroom Lock - Square	LB040200

Euro Profile Horizontal Mortice Lock

- For wooden doors hinged on the left or right, requiring key and lever handle/knob operation
- 150mm Case Depth - 51mm Cylinder Backset - 127mm Handle Backset.
- Accepts bolt through furniture

Product Title	Code
Euro cylinder Mortice Lock case only Polished Brass 150mm	LB030205
Euro cylinder Mortice Lock case only Satin Chrome 150mm	LB030200

Cylinder Rim Night Latch

- Security nightlatch version features manual deadlocking by reverse turn of key in outside of cylinder. Standard nightlatch doesn't have this feature.
- Key operation from the outside, and lever handle operation from the inside.
- 10 year manufacturers guarantee

Product Title	Code
Security - 40mm backset Brasslux Case - Polished brass cylinder Rim Night Latch	LC010420
Security - 40mm backset DMG Case - Polished brass cylinder Rim Night Latch	LC010140
Security - 40mm backset DMG Case - Satin Chrome cylinder Rim Night Latch	LC010150
Security - 60mm backset Brasslux Case Polished Brass cylinder Rim Nig	LC010360
Security - 60mm backset Dark Metal Grey Case Polished Brass Steel cylinder	LC010340
Security 60mm - backset Dark Metal Grey Case Satin Chrome cyl Rim Night Latch	LC010350
Standard - 40mm backset DMG Case - Polished brass cylinder Rim Night Latch	LC010380
Standard - 40mm backset DMG Case - satin chrome cylinder Rim Night Latch	LC010390
Standard - 60mm backset DMG Case - Polished brass cylinder Rim Night Latch	LC010310
Standard - 60mm backset DMG Case - satin chrome cylinder Rim Night Latch	LC010130



Yale BS3621:2004 British Standard Cylinder Rim Lock

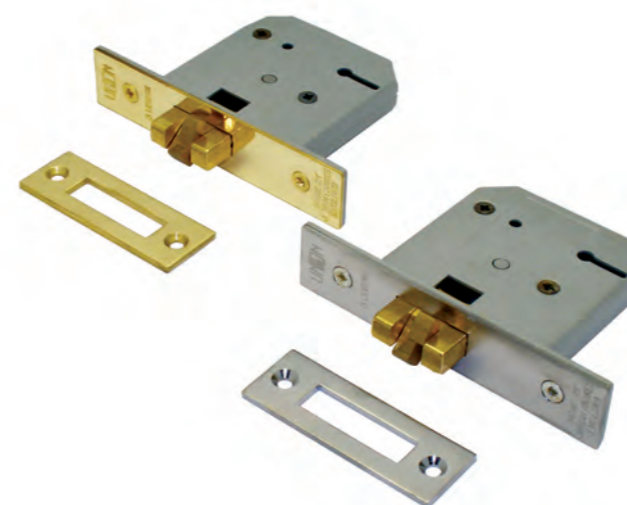
- Kitemarked to BS3621:2004
- Recommended by insurance companies and the police.
- Key operation from outside
- Key and lever operation from the inside
- Lachbolt automatically locks the door on closing

Product Title	Code
40mm Backset - Polished Brasslux British Standard Cylinder Nightlatch	LC010560
40mm Backset - Polished Chrome British Standard Cylinder Nightlatch	LC010850
60mm Backset - Polished Chrome British Standard Cylinder Nightlatch	LC010585
60mm Backset - Polished Brasslux British Standard Cylinder Rim Lock	LC010580

Union 3 Lever Mortice Deadlock for Sliding Doors

- For wooden doors sliding from the left or right requiring key operation only
- Claw deadbolt can be unlocked from either side of door

Product Title	Code
Mortice Sliding Dead Lock Polished BraSatin Stainless Steel 75mm case - 57m	LB010160
Mortice Sliding Dead Lock Satin ChromeP 75mm case - 57mm Backset 3 Lever	LB010170



Union Cylinder Mortice Sliding Door Lock

- For wooden doors sliding from the left or right requiring key operation only
- Locked and opened from either side of door.
- Cylinder Backset 57mm

Product Title	Code
Polished Brass 75mm cylinder Mortice Sliding Door Lock C	LB030150
Satin Chrome 75mm cylinder Mortice Sliding Door Lock case	LB030160



Electronic Digital Code Lock

- This is a heavy duty keyless digital lock with full size lever handles, allowing use as the primary lock on most doors, particularly in high traffic situations. This model has a stylish, contemporary design, ideal for a wide range of heavy duty entry control applications. The Piezo actuator, used for the first time in a stand alone electronic lock provides a battery life of over 500,000 operations (approximately ten times more than a typical electronic push button lock).
 - A simple and cost effective access solution.
 - 500,000 Operations from 4 x AA cells, batteries included.
 - Easy installation and programming
 - 91 different user codes
 - Reliable - Solid state Piezo technology, with low component count



Product Title	Code
Polished Brass Electronic Digital Door Lock	XC010080
Satin Chrome Electronic Digital Door Lock	XC010107

Digital Code lock

- Push button mechanical locks, ideal for restricting access for low usage doors i.e. stock cupboards, staff toilets, your office... the list goes on. Four standard functions to choose from to suit specific requirements.
- Fully mechanical
- Easy to fit, with all parts and fixings included
- Suitable for internal and external use
- Code can be changed quickly, as required
- Over 8,000 codes to choose from
- Slide button which can be used to hold open the latchbolt when the lock is not required to be operational.



Product Title	Code
Polished Brass Codelock Digital Lock With Hold Open	LM010040
Polished Brass Codelock With Hold Open	XC010050
Satin Chrome Codelock Digital Lock With Hold Open	LM010030
Satin Chrome Codelock With Hold Open	XC010200
Satin Stainless Steel Codelock With Hold Open	XC010040
To Suit Panic Bolt - Digital external unit.	XC010105

Keywords

- An explanation of some of the terms used in this section
- Backset - Is the measurement from the forend (front) of the lock to the centre of the key hole.
- Levers - The number of levers a lock has gives an indication of its security level. A higher amount of levers increases the difficulty when picking the lock, and the amount of differs the lock lock can offer.
- BS 3621 - This is the British Standard thief resistance specification for locks. This standard is a straight-forward, pass or fail there are no grades, those accredited the BS:3621 standard are recommended for use on entrance doors. Some insurance companies will specify the use of a BS:3621 lock as a condition of the policy.



Accessible Bathroom - Facility Indicator Furniture

- Designed to assist those with impaired dexterity

Product Title	Code
Aluminium Facility Indicator Bolt LH	OD040590
Aluminium Facility Indicator Bolt RH	OD040610

Indicator Bolt

- Suitable for doors 28-48mm thick
- Available finishes: Matching fixings supplied

Product Title	Code
Electro Brassed Facility Indicator Bolt	LB011370
Polished Chrome Facility Indicator Bolt	LB011510
Satin Chrome Facility Indicator Bolt	LB011390
Satin Stainless Steel Facility Indicator Bolt	HD010930

For our range of access control devices please see page

Why not let us do the hard work?

Our project specification service is FREE to all of our customers. All you need to do is choose the style of ironmongery you are interested in, give us the plans for your project and we'll do the rest. All ironmongery is chosen to match your specification and budgetary requirements. Our trained staff will ensure that all hardware is compatible to save you time installing. All hardware is specified according to current legislation, i.e. DDA.

