

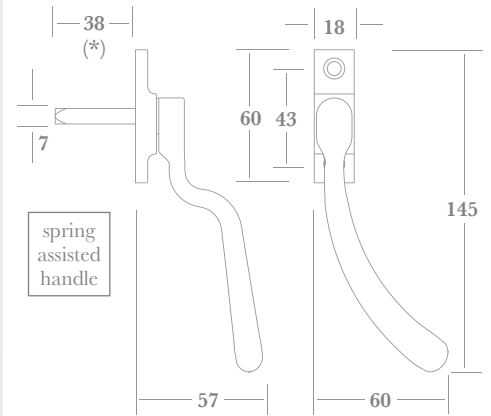
Espagnolette Handles

Three traditional period Espagnolette Handles designed to operate multipoint window mechanisms, all feature spring assistance for positive open and closed positioning.

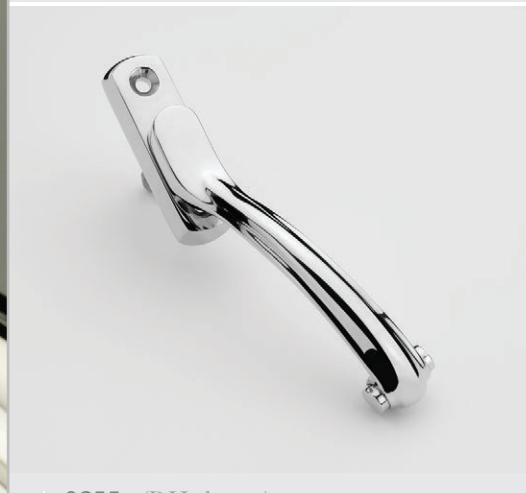
A lockable version with removable key is also available, as is an optional 8mm adaptor sleeve.



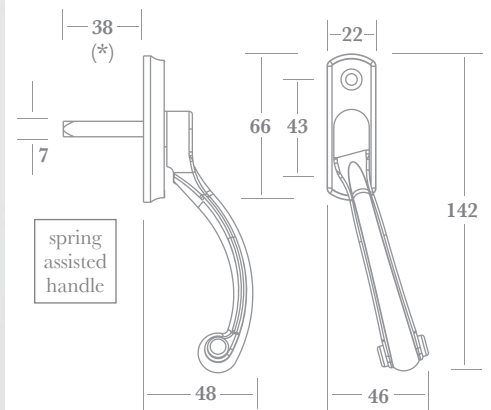
▲ 0350 (RH shown)



(*) other lengths available upon request



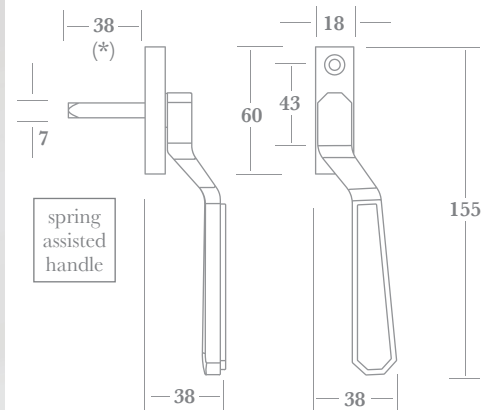
▲ 0355 (RH shown)



(*) other lengths available upon request



▲ 9585 (RH shown)



(*) other lengths available upon request

Fixings

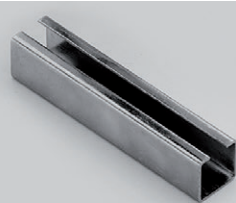
Supplied with finish matched M5 x 40mm machine screws and fitted stainless steel spindle.

How to Order

- 1) select HANDLE (e.g. 0350)
- 2) choose LOCKING OPTION if required (e.g. 0350LK)
- 3) add FINISH (e.g. 0350PB, or 0350LK/PB)
- 4) add HANDING (e.g. 0350PB/LH, or 0350LK/PB/LH).

NB. An adaptor sleeve is available for locking mechanisms with an 8mm hub (e.g. 0350PB/LH/8MM).

Finishes - See our price list or website for finish availability.



▲ optional 8mm adaptor sleeve (stainless steel)



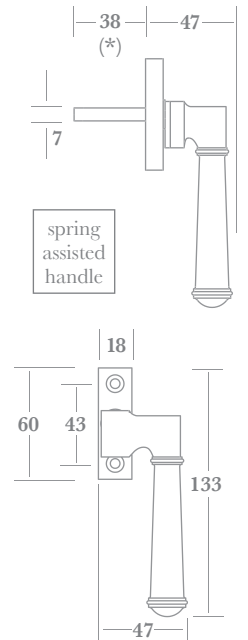
▲ LK version with nickel plated key



Espagnolette Handles

Two classic and two contemporary Espagnolette Handles designed to operate multipoint window mechanisms, each featuring spring assistance for positive open and closed positioning.

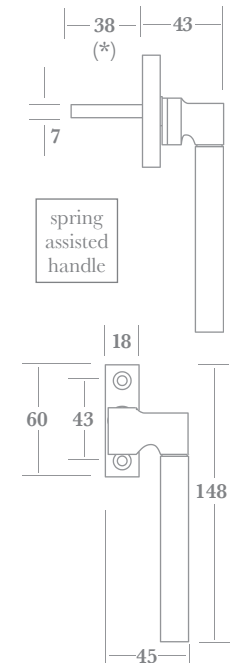
A lockable version with removable key is also available, as is an optional 8mm adaptor sleeve.



(* other lengths available upon request

▲ 0306

▲ 0308 (RH shown)



(* other lengths available upon request

▲ 0352

▲ 0351 (RH shown)

Fixings

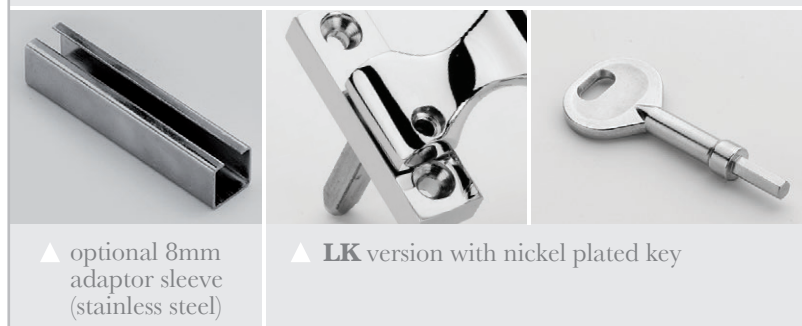
Supplied with finish matched M5 x 40mm machine screws and fitted stainless steel spindle.

How to Order

- 1) select HANDLE (e.g. 0306)
- 2) choose LOCKING OPTION if required (e.g. 0306LK)
- 3) add FINISH (e.g. 0306PB, or 0306LK/PB)
- 4) add HANDING (e.g. 0306PB/LH, or 0306LK/PB/LH).

NB. An adaptor sleeve is available for locking mechanisms with an 8mm hub (e.g. 0306LK/PB/LH/8MM).

Finishes - See our price list or website for finish availability.



▲ optional 8mm adaptor sleeve (stainless steel)

▲ LK version with nickel plated key

Espagnolette Handles

Three classic designs of Espagnolette Handle for the operation of multipoint window mechanisms, each featuring spring assistance for positive open and closed positioning.

A lockable version with removable key is also available, as is an optional 8mm adaptor sleeve.



approx actual size

▲ **0300** (RH shown)



▲ **0302** (RH shown)



▲ **0304** (RH shown)

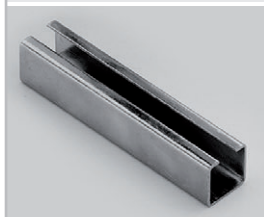
Fixings

Supplied with finish matched M5 x 40mm machine screws and fitted stainless steel spindle.

How to Order

- 1) select HANDLE (e.g. **0302**)
- 2) choose LOCKING OPTION if required (e.g. **0302LK**)
- 3) add FINISH (e.g. **0302PB**, or **0302LK/PB**)
- 4) add HANDING (e.g. **0302PB/LH**, or **0302LK/PB/LH**).

NB. An adaptor sleeve is available for locking mechanisms with an 8mm hub (e.g. **0302LK/PB/LH/8MM**).



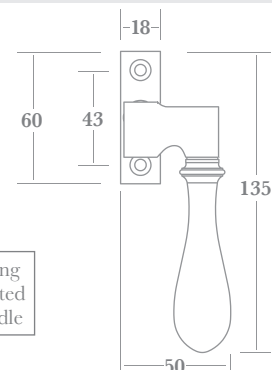
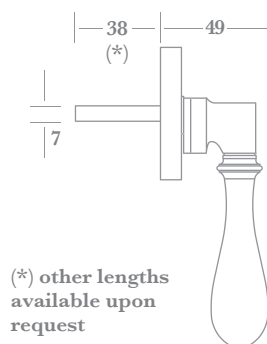
▲ optional 8mm adaptor sleeve (stainless steel)



▲ **LK** version with nickel plated key

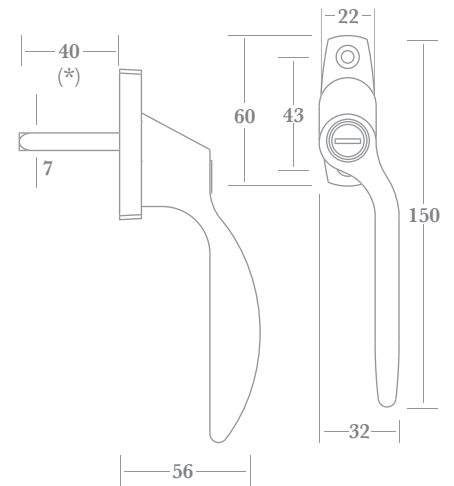


Finishes - See our price list or website for finish availability.



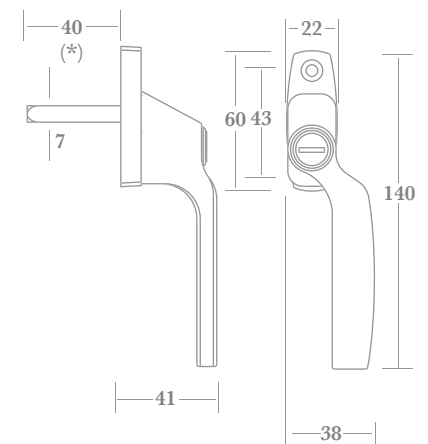
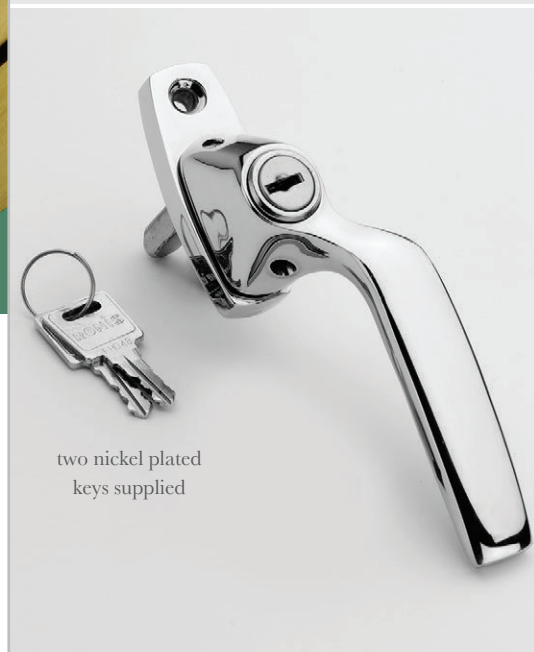
Espagnolette Handles

Two designs of key lockable Espagnolette Handle for the operation of multipoint window mechanisms - both available with an optional 8mm adaptor sleeve if required.



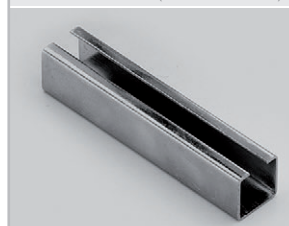
(*) other lengths available upon request

▲ 0358 (RH shown)



(*) other lengths available upon request

▲ 0359 (RH shown)



▲ optional 8mm adaptor sleeve (stainless steel)

Fixings

Supplied with finish matched M5 x 40mm machine screws and fitted stainless steel spindle.

How to Order

- 1) select HANDLE (e.g. 0359)
- 2) add FINISH (e.g. 0359PB)
- 3) add HANDING (e.g. 0359PB/LH).

NB. An adaptor sleeve is available for locking mechanisms with an 8mm hub (e.g. 0359PB/LH/8MM).

Finishes - See our price list or website for finish availability.