

HOPPE® 

Handle of excellence.

Quick-FitPlus



AC LEIGH

ARCHITECTURAL IRONMONGERS
SECURITY SPECIALISTS

QUICK-FITPLUS

LESS IS MORE

Quick-FitPlus is the logical further development of the tried and tested Quick-Fit connection.

It is not just the door handles which can be fitted easily but also the attractive flat handle roses and escutcheons. The stainless steel handle roses and escutcheons, which are only 2 mm thick, come in round or square versions. They are available in various technical specifications and make a striking feature on any door when combined with the many attractive handle designs.

The advantages of Quick-FitPlus at a glance:

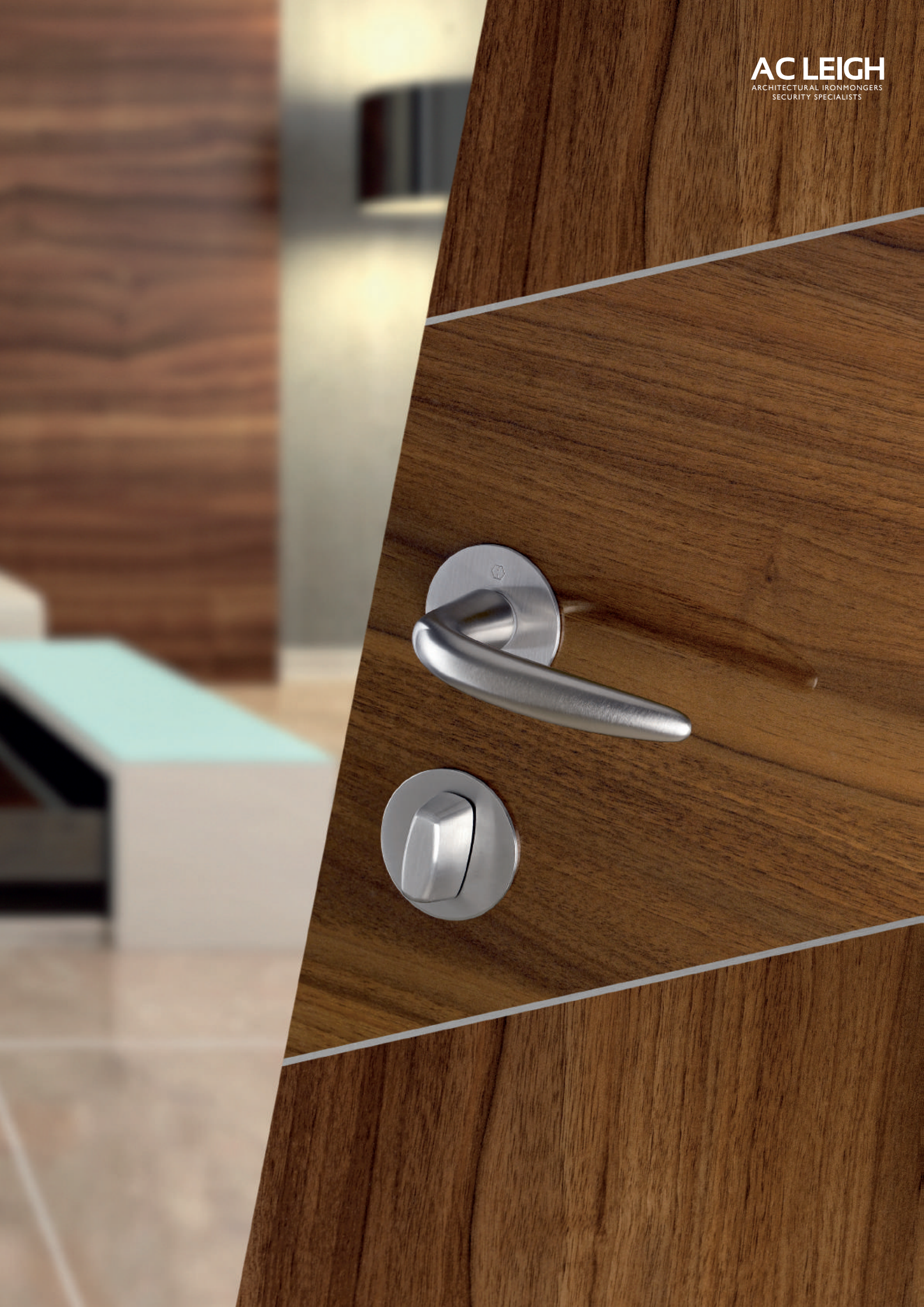
- All advantages of the patented Quick-Fit connection (see p. 4)
- Stainless steel flat handle roses and escutcheons (only 2 mm thick) in keeping with today's trends in design
- Numerous combination possibilities of handles made of brass, stainless steel and aluminium, with round or square handle roses and escutcheons
- Easy and precise assembly of the whole door handle set (door handles, flat handle roses and escutcheons) in a few seconds and without the need for screws
- Suitable for renovation, thanks to the extra large flat handle roses and escutcheons
- Tested to DIN EN 1906

THE QUALITY YOU EXPECT

Quick-FitPlus sets with short or through-going supporting lugs correspond to Category of Use grade 3 and Durability Class grade 7 according to DIN 1906 and are therefore suitable for use in public buildings.

Important:

Quick-FitPlus products must not be combined with spindles made by other manufacturers!





TIME IS MONEY – QUICKER AND BETTER THE INNOVATIVE QUICK-FIT SPINDLE

With normal door handle installation, lots of steps have to be taken, quite often not without awkward fumbling. This is tedious and takes time. What is infinitely better is the Quick-Fit connection. With its advanced technology, door handles can be installed in one simple step – and to last!

The key point of the new technology is the blocking mechanism. This holds the solid spindle of the other handle firmly and without play. It is with the whole width of the spindle that maximum torque transmission is achieved. The Quick-Fit connection is a variable axial handle fitting, tested according to DIN EN 1906 and can be used for various door-thicknesses (in a defined area).

Important:

Quick-Fit products should not be combined with spindles from other manufacturers!

European Patent EP 1683933

U.S. patent no. 7,686,357

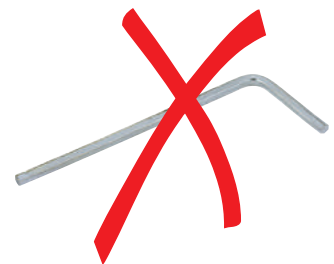
Quick-Fit connection



Door handle fitting
in about 8 seconds






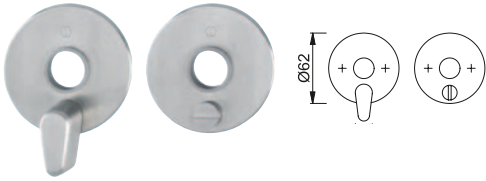

The advantages of the Quick-Fit connection at a glance:

- Very quick door handle fitting: around 75% time saving compared with normal fitting
- No Allen screw or transverse spindles needed
 - no hole for Allen screw needed
 - no alignment of the spindle necessary when tightening the Allen screw
 - no loosening of the Allen screw or spindle possible
- Integrated blocking mechanism in the receiver handle
 - no tools needed for installation
 - play-free handle connection
 - long-lasting, firm fitting of the door handles
- Use of a solid spindle
 - solid spindle for maximum torque transmission
- Variable axial handle fitting tested to DIN EN 1906
 - can be used for various door-thicknesses (in a defined area)
- Easy and quick removal of door handles
 - eg, with the Allen key included or a screwdriver



SHAPES AND EXECUTION OF THE FLAT HANDLE ROSES AND ESCUTCHEONS







Handle roses

Shape	Short supporting lugs	Through-going supporting lugs	Self-adhesive
	 E849	 E849N	 E849-SK
		 E29FL	
		 E29FLR	



Handle roses with short or through-going supporting lugs (E847 and E847N, E848 and E848N as well as E849 and E849N) can be fit with a spring cassette as an option. Please see p. 15 for door preparation and fitting.

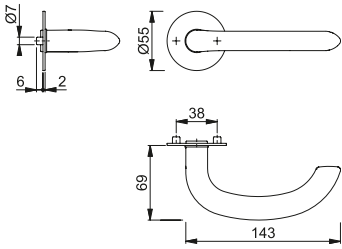
Escutcheons

Shape	Through-going supporting lugs	Self-adhesive
	 E849NS	 E849S-SK
	 E29FLS	 E29FLS-SK



duraplus[®]

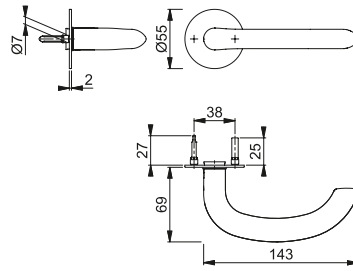
Quick-FitPlus stainless steel lever sets on flat handle rose for interior doors: tested to DIN EN 1906, lever with Quick-Fit connection (solid spindle), handle rose, non-screw fitting. Stainless steel finish: F69 brushed



EI 138Z/849

Lever set on handle rose with **short supporting lugs**

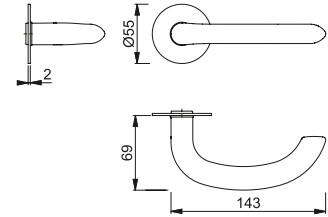
DIN EN 1906:
category of use: grade 3



EI 138Z/849N

Lever set on handle rose with **through-going supporting lugs**

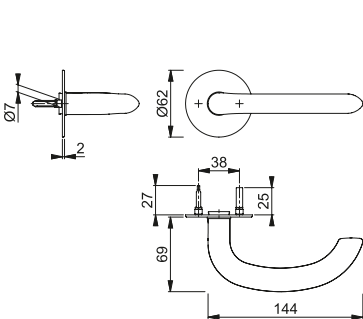
DIN EN 1906:
category of use: grade 3



EI 138Z/849-SK

Lever set on **self-adhesive** handle rose

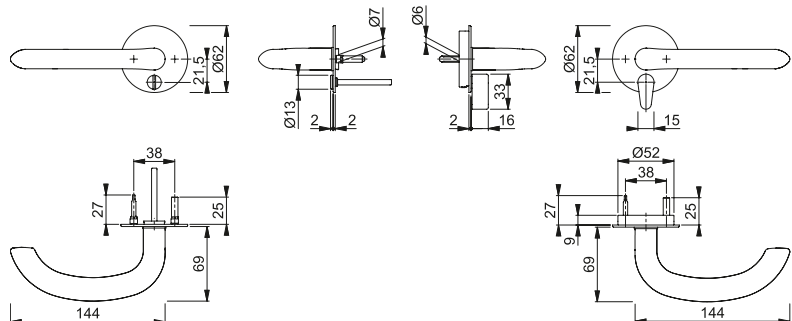
DIN EN 1906:
category of use: grade 2



EI 138Z/29FL

Lever set on handle rose with **short supporting lugs**

DIN EN 1906:
category of use: grade 3

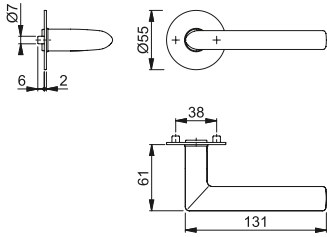


EI 138Z/29FLR

Lever set on handle rose with incorporated locking unit and **through-going supporting lugs**

DIN EN 1906:
category of use: grade 3

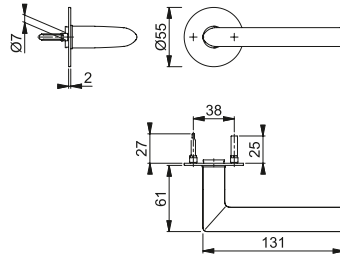




EI 140Z/848

Lever set on handle rose with **short supporting lugs**

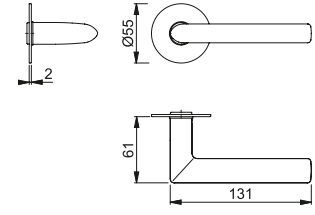
DIN EN 1906:
category of use: grade 3



EI 140Z/848N

Lever set on handle rose with **through-going supporting lugs**

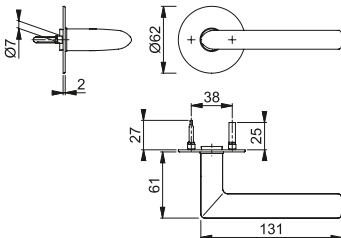
DIN EN 1906:
category of use: grade 3



EI 140Z/848-SK

Lever set on **self-adhesive** handle rose

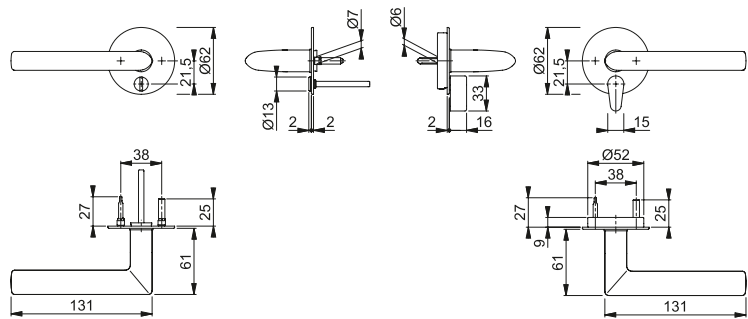
DIN EN 1906:
category of use: grade 2



EI 140Z/29FL

Lever set on handle rose with **short supporting lugs**

DIN EN 1906:
category of use: grade 3



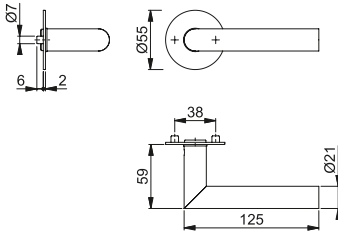
EI 140Z/29FLR

Lever set on handle rose with incorporated locking unit and **through-going supporting lugs**

DIN EN 1906:
category of use: grade 3



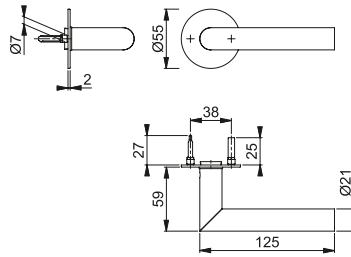
AMSTERDAM



EI 400Z/849

Lever set on handle rose with **short supporting lugs**

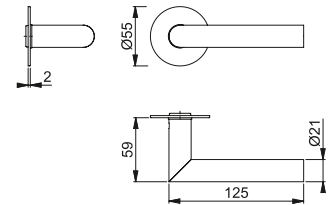
DIN EN 1906:
category of use: grade 3



EI 400Z/849N

Lever set on handle rose with **through-going supporting lugs**

DIN EN 1906:
category of use: grade 3

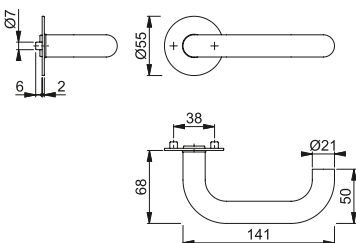


EI 400Z/849-SK

Lever set on **self-adhesive** handle rose

DIN EN 1906:
category of use: grade 2

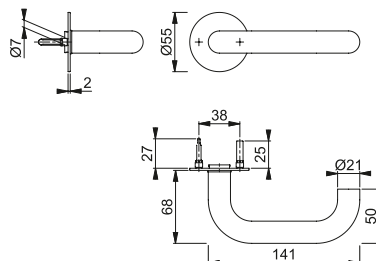
PARIS



EI 38Z/849

Lever set on handle rose with **short supporting lugs**

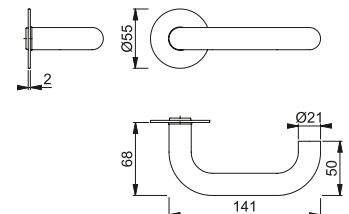
DIN EN 1906:
category of use: grade 3



EI 38Z/849N

Lever set on handle rose with **through-going supporting lugs**

DIN EN 1906:
category of use: grade 3



EI 38Z/849-SK

Lever set on **self-adhesive** handle rose

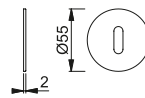
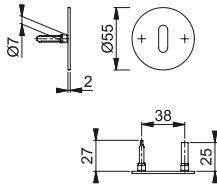
DIN EN 1906:
category of use: grade 2



Oval standard keyhole (OB)

Profile cylinder (PZ)

Exterior slotted head (SK), interior turn button (OL)



E849NS

Quick-FitPlus stainless steel flat escutcheons (round) for interior doors: escutcheons with through-going supporting lugs, non-screw fitting

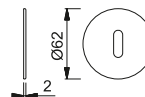
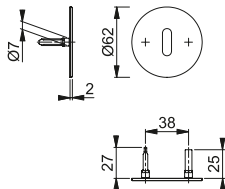
E849S-SK

Quick-FitPlus stainless steel flat escutcheons (round) for interior doors: **self-adhesive** escutcheons, non-screw fitting



Oval standard keyhole (OB)

Profile cylinder (PZ)



E29FLS

Quick-FitPlus stainless steel flat escutcheons (round) for interior doors: escutcheons with through-going supporting lugs, non-screw fitting

E29FLS-SK

Quick-FitPlus stainless steel flat escutcheons (round) for interior doors: **self-adhesive** escutcheons, non-screw fitting

Stainless steel finishes:

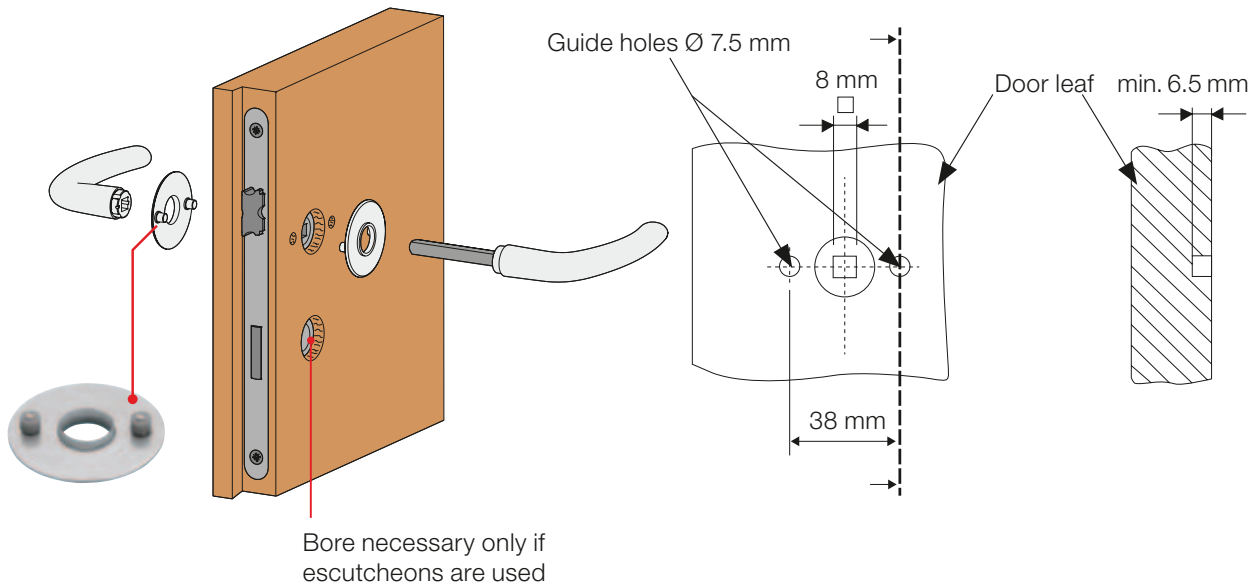
F69 brushed

F41-R brushed chrome - Resista®

HANDLE ROSE WITH SHORT SUPPORTING LUGS

Door Preparation

This solution is for use on standard doors with standard locks. No special door preparation is needed. Only two 7.5-mm-Ø guide holes are necessary for the short supporting lugs.



Handle roses E847, E848 and E849 with short supporting lugs can be fit with a spring cassette as an option. Please see p. 15 for door preparation.

The Quick-FitPlus is so easy to fit

The handle roses with short supporting lugs and the door handles are simply fitted together and self-adhesive escutcheons added if necessary (see p. 17), with the whole set able to be installed without the need for screws.



1 Place the handle roses in position



2 Put the door handles together



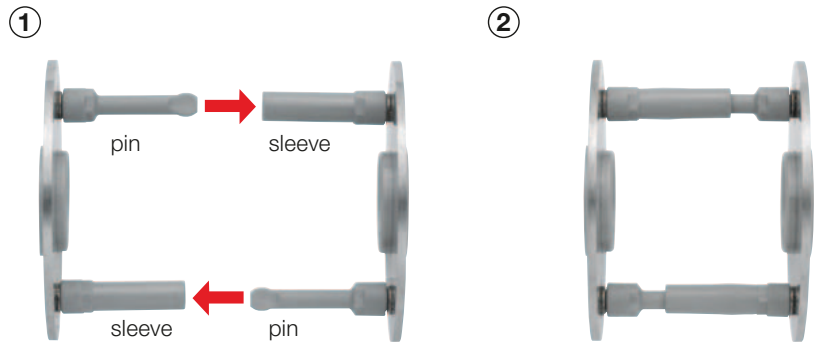
3 If necessary, stick on the escutcheons – and fitting is complete!

HANDLE ROSE WITH THROUGH-GOING SUPPORTING LUGS

Through-going supporting lugs

The through-going supporting lugs of the handle roses consist of a nylon pin and sleeve each. By plugging one into the other a play-free and firm fixing is produced.

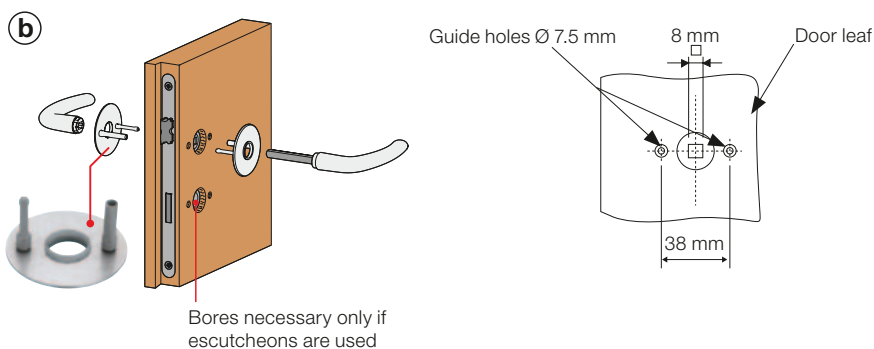
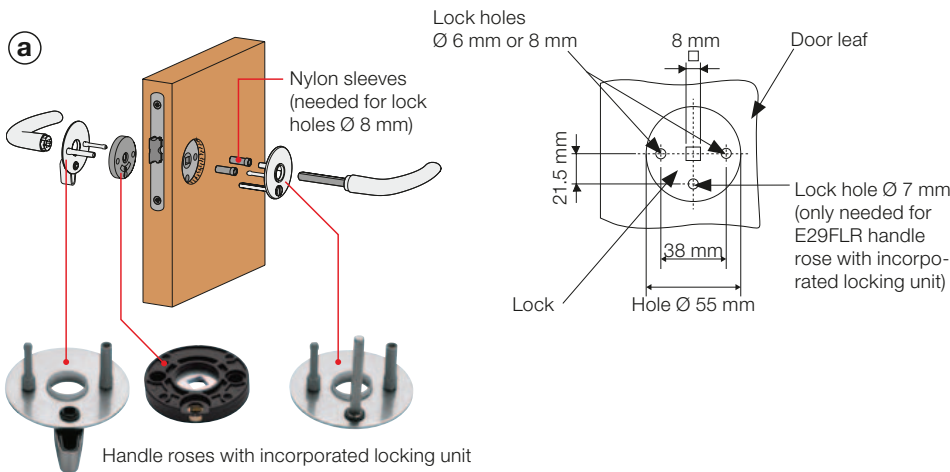
Matching escutcheons with through-going supporting lugs are also available. Please see p. 16 for door preparation and fitting.



Door preparation

Only one bore is necessary in the case of a handle rose with incorporated locking unit (a)

If a handle rose without locking function is used, door preparation can ensue as in (a) (E29FL) or in (b) (E847N, E848N and E849N). Please note that the lock case must have the appropriate holes.



Handle roses E847N, E848N and E849N with through-going supporting lugs can be fitted with a spring cassette as an option. Please see p. 15 for door preparation.

HANDLE ROSE WITH THROUGH-GOING SUPPORTING LUGS

The Quick-FitPlus is so easy to fit

The handle roses with through-going supporting lugs and door handles are simply fitted together, with the whole set able to be installed without the need for screws.

If a locking function is preferred, either a handle rose with incorporated locking unit (E29RFL) or conventional escutcheons can be used. These escutcheons are available with through-going supporting lugs (see p. 16) or as self-adhesive version (see p. 17).

(a) Quick-FitPlus with handle roses E29FL or E29FLR:



The enclosed black nylon sleeves are in place (though only in the case of lock holes of \varnothing 8 mm)



Put the handle roses together



Put the door handles together and fitting is complete! (If necessary, stick on the escutcheons)

(b) Quick-FitPlus with handle roses E847N, E848N or E849N:



Put the handle roses together



Put the door handles together



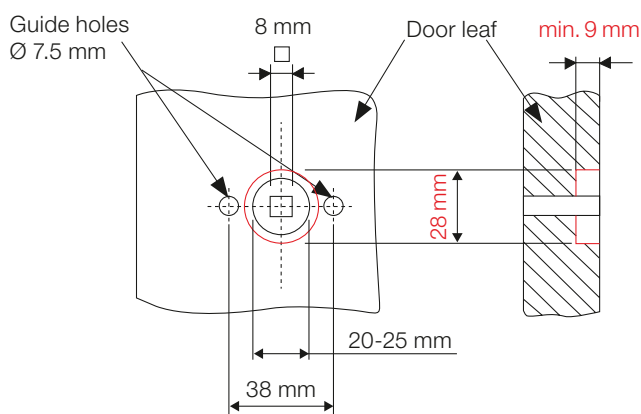
If necessary, put the escutcheons together – and fitting is complete!

New: Spring cassette for flat handle roses with supporting lugs

Handle roses with short or through-going supporting lugs (E847 and E847N, E848 and E848N as well as E849 and E849N) can be fit with a spring cassette as an option.

Door preparation

As the bore must be 28 mm in diameter in the area of the handle hole, it might be necessary to increase the existing hole. Important note - For rebated doors, it is recommended to drill the bore for the spring cassette on the rebated side of the door.



Drill the bore by using a standard Forstner bit (28mm diameter) and the drilling jig available from HOPPE for the spring cassettes of flat handle roses.

Fitting

Before fitting the Quick-FitPlus handle set, clip in the spring cassette on the back of the handle rose.



Please make sure to clip in the spring cassette in the right direction (the arrow indicates the handle's direction of operation).

Clip in the spring cassette on the back of the handle rose.

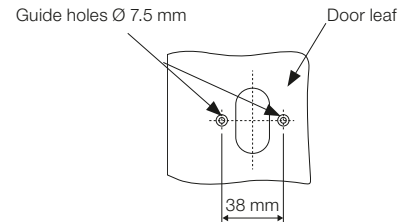
Put the handle roses together – and fitting is complete!

ESCUTCHEON WITH THROUGH-GOING SUPPORTING LUGS

New: Escutcheon with through-going supporting lugs

Door preparation and fitting

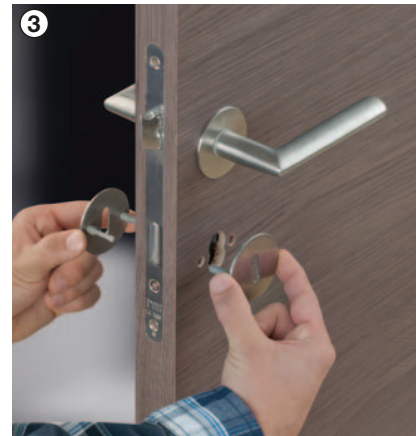
This solution is for use on standard doors with standard locks. No special door preparation is needed. Only two 7.5-mm-Ø guide holes are necessary for the through-going supporting lugs. Then the escutcheons can simply be put together.



1 Fix the template on the door by inserting the key into the keyhole and mark the bores for the guiding lugs.



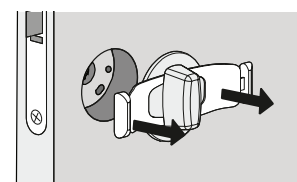
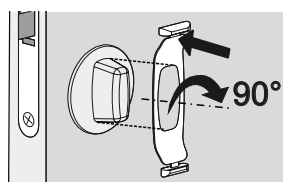
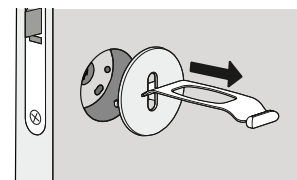
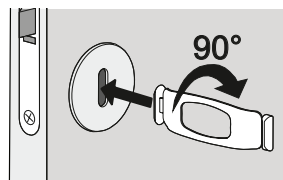
2 Drill the holes for the guiding lugs (remove the lock case for this).



3 Put the escutcheons together – and fitting is complete!

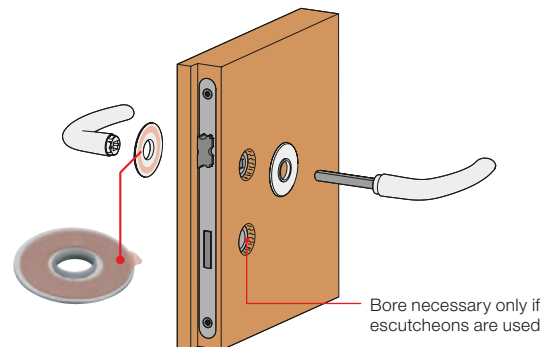
Disassembly

By using the disassembly aid, the flat handle roses and escutcheons (both self-adhesive and with supporting lugs) can easily be removed.



Simply stick on instead of screwing

In many areas, today's advanced bonding technologies have replaced screwed fastening used for ages. For example, the foil used for Quick-FitPlus, which is adhesive on both sides, is used by the car and furniture industry, too. According to the respective demands, it is resistant to elevated temperatures, moisture and ageing.



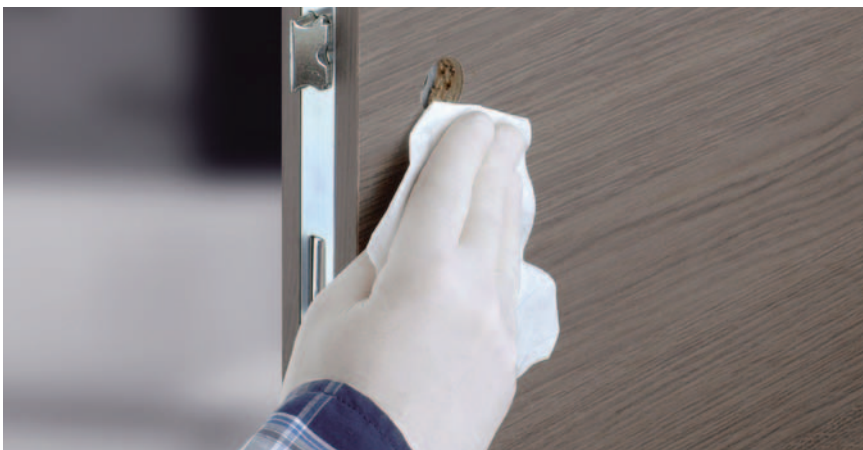
The self-adhesive handle roses and escutcheons are suitable for:

- Solid wood doors
- Real wood veneer doors
- Painted doors
- Decorative surface-/laminated doors

The door surfaces in the area where the adhesive is to be used must be totally flat. The sticking surfaces must be clean, dry and free of both grease and separating agents as well as capable of bearing the weight. Yet, for stained doors and doors with oil finish, conventional escutcheons with screw fixing are recommended.

Door preparation

This solution is for use on standard doors with standard locks. No special door preparation is needed.



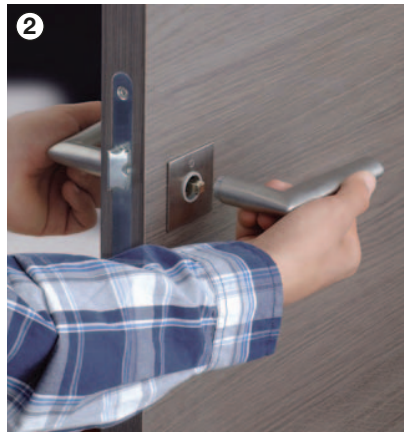
Clean the door surface in the area where the adhesive is to be used. Only the cloth delivered with the products should be used to clean or remove grease from the surface of the door. Smooth the protruding edges of the holes if necessary.

The Quick-FitPlus is so easy to fit

All you need to do is put the handle roses and door handles together and attach the self-adhesive escutcheons if required. So, the whole set can be fitted without any screws and tools.



1 Stick on the handle roses



2 Put the door handles together



3 If necessary, stick on the escutcheons – and fitting is complete!



Positioning and sticking of the escutcheons

The self-adhesive oval keyhole escutcheons can be positioned with the enclosed installation key.

For the installation of the profile cylinder escutcheons the cylinder already fitted serves as a guide.

The privacy version can be positioned by using the spindle connected to the handle rose.

Should the escutcheon not be positioned accurately enough, it is still possible to re-position it as adhesion is complete only after 24 hours.

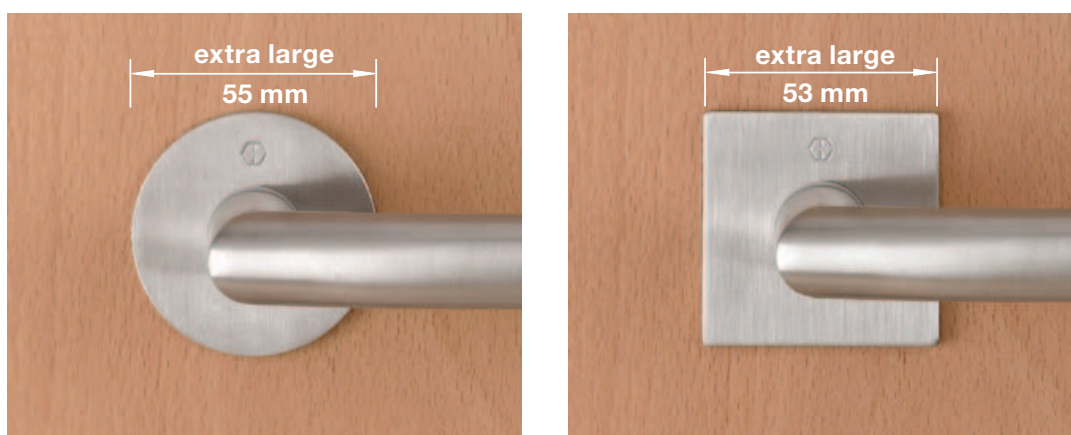


Disassembly

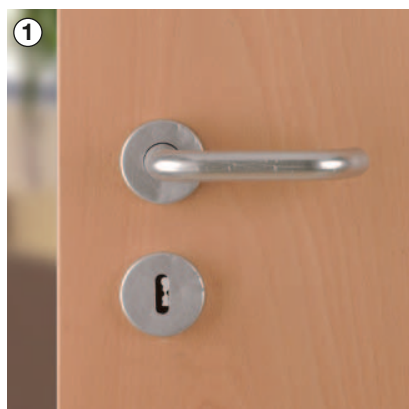
With the help of a normal hairdryer you can loosen the adhesion again and then gently remove the handle rose from the door panel by using the disassembly aid (see p. 16) or a scraper.

Renovation with Quick-FitPlus

The extra-large square or round handle roses are ideal for renovation work as they completely cover any signs of the old fittings.



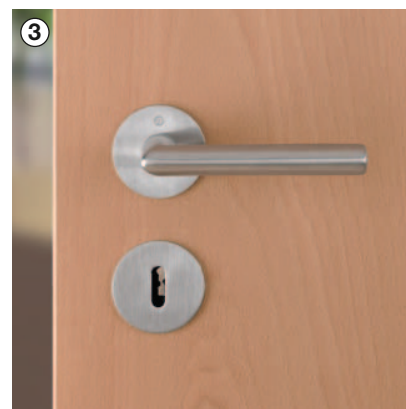
You can give your door a whole new appearance in a few movements of the hand, with Quick-FitPlus sets.



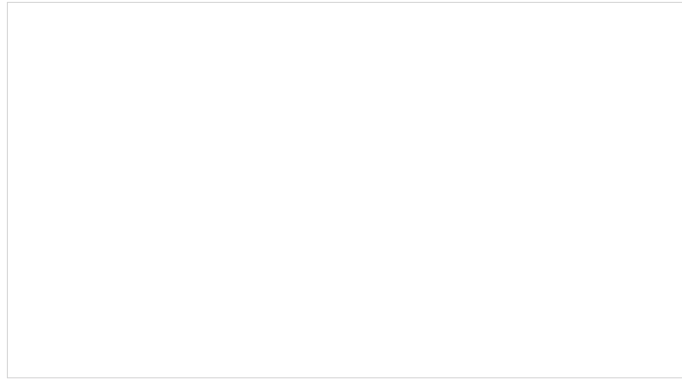
The **current hardware** is no longer quite up to date, so you want to replace it.



Its removal quite often leaves unsightly marks on the door.



The Quick-FitPlus fittings completely cover any signs of the old fittings.



AC LEIGH BRANCHES

NORWICH

61-67 St. Benedicts Street,
Norwich, NR2 4PD
Tel: 01603 216500
Fax: 01603 216510
Email: sales@acleigh.co.uk

COLCHESTER

11 Grange Way,
Whitehall Industrial Estate,
Colchester, CO2 8HG
Tel: 01206 877488
Fax: 01206 877480
Email: colchester@acleigh.co.uk

IPSWICH

Unit 2-3, Dencora Business Centre,
Whitehouse Road, Ipswich, IPI 5LT
Tel: 01473 292810
Fax: 01473 292818
Email: ipswich@acleigh.co.uk

www.acleigh.co.uk