

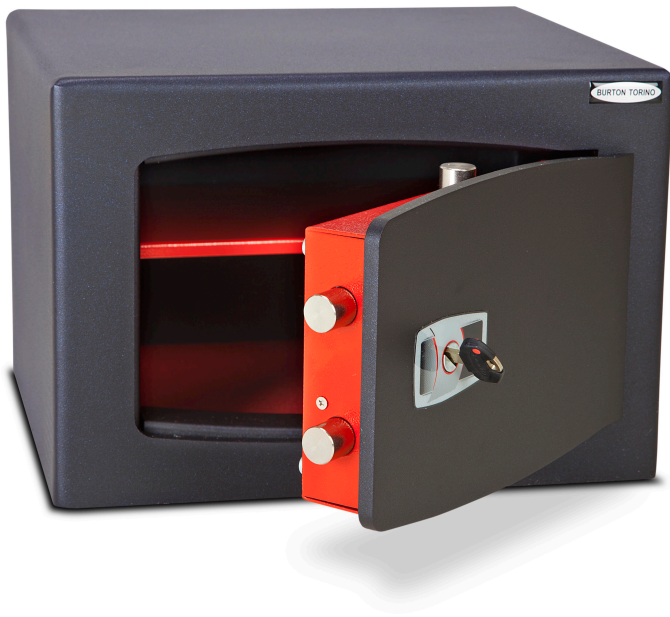
BURTONSAFES

THE SURE DEFENCE

USER INSTRUCTIONS

TORINO

LOCK MODEL: TORINO EUROKEY



ABOUT TORINO

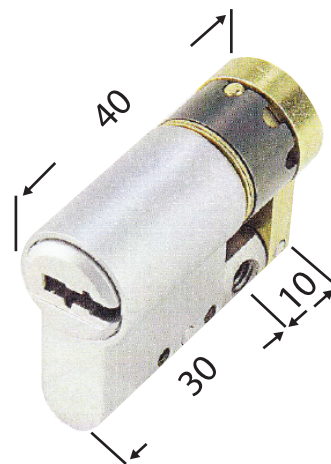
The safe comes supplied with a set of **3 reversible master keys** (indicated on the handle by **different coloured dots**) contained in a sealed bag, in which there is also the ownership card for controlled key copying.

Supplied in a separate bag there is a **CA key** known as a **“worksite”** key (indicated on the handle by a **red dot**) to be used during the installation of the safe. Once the safe has been installed, the worksite key is disabled and cannot be used after the first use of the master key.

CYLINDER SUBSTITUTION:

Should you wish to open more than one European grade cylinder lock with the same key (KA: all the doors can be opened by its individual key or by the Master Key), only the cylinder needs to be replaced (an easy quick procedure described below), by acquiring a 30-10mm European grade half cylinder lock with adjustable cam of any make from any reliable hardware store or key specialist, as the size and shape are regulated by European standards.

EUROPEAN GRADE HALF CYLINDER 30-10MM WITH ADJUSTABLE CAM:



SUBSTITUTION OF THE NEW CYLINDER:

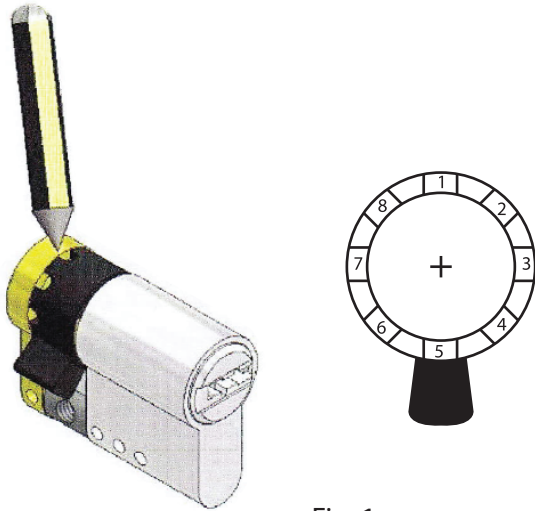


Fig. 1

- Remove the key from the lock.
- Push the tip of a pencil into the pin and rotate the CAM until it is lined up with the lower part of the cylinder (see fig.1.) The pin will automatically stop, locking the CAM into its new position.

INSTRUCTIONS FOR THE SUBSTITUTION OF THE CYLINDER (TO BE CARRIED OUT WITH BOLTS RETRACTED):

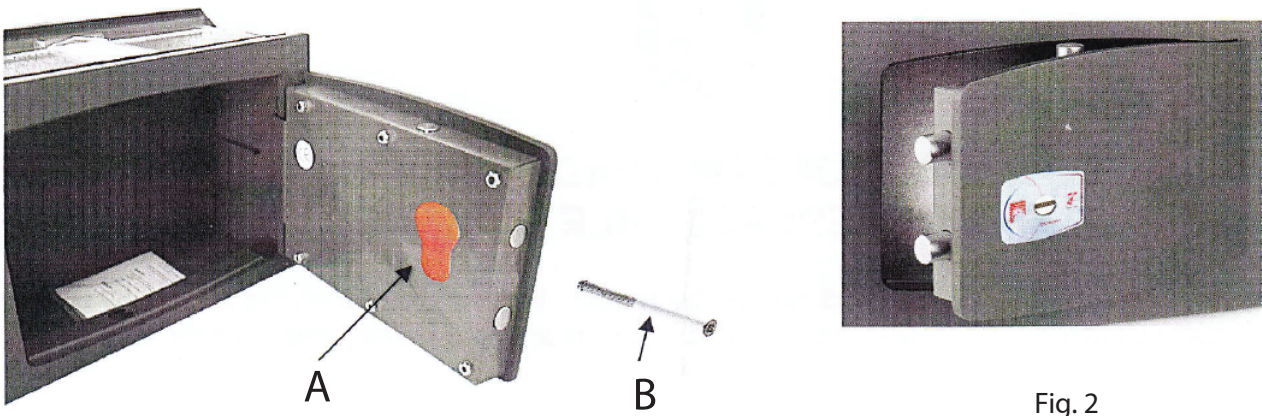
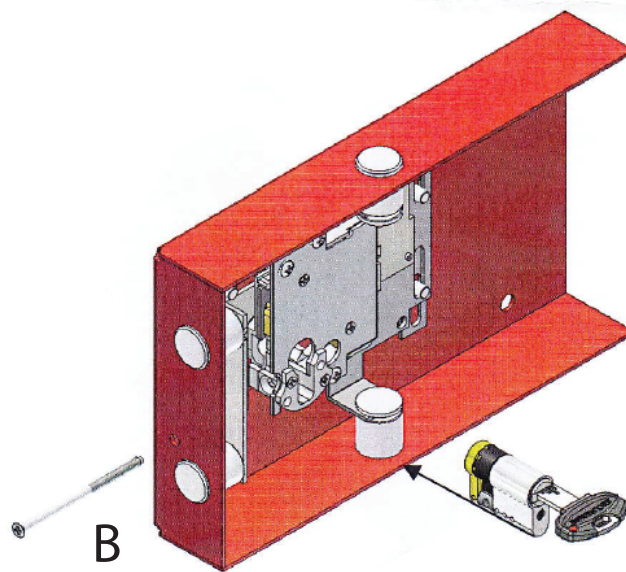


Fig. 2

- Remove the red plastic cover (A) from the inside of the door.
- Unscrew the screw (B) which holds the cylinder in the lock, until it becomes free from the cylinder. The screw will not come all the way out but will stay inside the lock.
- Insert the key into the cylinder and push it into the lock. When part of the cylinder comes out of the inside of the lock, keep hold of it and remove the key.
- Remove the cylinder from the lock.
- Insert the new cylinder into place, making sure that the cam has been lined up with the lower part of the cylinder beforehand. Make sure that the side with the keyhole is on the outside part of the door (see fig.2)
- Tighten the screw (B) and make sure that the lock is working properly.
- Put the red cover (A) back in place.

SUBSTITUTION OF THE CYLINDER IF IT DOES NOT HAVE AN ADJUSTABLE CAM:



Should you have a replacement cylinder without an adjustable cam it is also possible to substitute this using the following procedure:

- Unscrew the nuts that hold the red lock in place and remove it.
- Unscrew the screw (B) that holds the cylinder in the lock.
- Remove the cylinder from the lock.
- Insert the new cylinder, making sure to turn the key to insert the CAM..
- Tighten the screw (B) and check that the lock is working correctly.
- Remove the key and reposition the lock.
- Tighten the nuts that fix the lock.