



SKU: KC064 EAN Number: 5030282120610

## KEY CABINETS

When it comes to keys, you want to make sure they're safe. From a simple key cabinet to a more advanced issue and monitoring system, Securikey can offer a solution to meet your requirements.

### SYSTEM 64

- 1.5mm steel cabinet with flush closing rim to resist forced entry
- Adjustable colour coded and numbered hook bars allow the layout to be customised
- Ingenious key tabs are designed to hang so that the number is always visible
- Closed loops included for use with optional security seals
- Durable Light Grey paint finish will suit most environments
- Supplied with security lock and 2 keys



## ADDITIONAL INFORMATION

<b>Weight</b>	5.000 kg
<b>Dimensions</b>	450 (H) x 300 (W) x 80 (D) mm
<b>Standard</b>	Bronze
<b>EAN</b>	5030282120610
<b>Capacity</b>	64 keys
<b>Locking Options</b>	A – REVO B/BR, B – 3/4 Wheel Mechanical Combination, C – REVO A, D – Padlocking Cam Lock, F – CL1000, I – La Gard 39E, K – La Gard 66E, L – Safe Logic

## SYSTEM CABINETS FOR 64 KEYS IMAGES



System 64



System 64 CL1000 Electronic Cam Lock

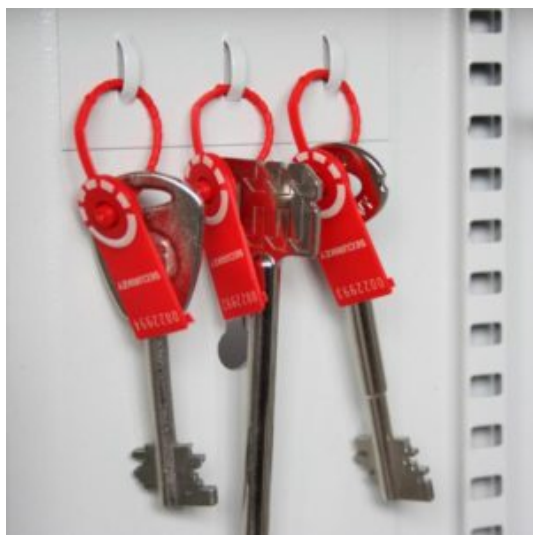


System 64 Electronic Lock REVO A



System 64 Dial Combination Lock

SYSTEM CABINETS FOR 64 KEYS IMAGES



Security Seals & Loops

Your Securikey Stockist

Every effort has been made to ensure that the information in this brochure is correct. We have a policy of continually developing and improving our products and reserve the right to change specification without notice. By virtue of the Trades Description Act 1968 all measurements and weights must be considered approximate.

