

# EURO GRADE

Grade 0,1, 2, 3, 4, 5 – acc. to EN 1143-1

## INSTALLATION OF PRODUCT

In order to correctly install the product it is necessary to take into account the weight capacity of the floor, the external dimensions of the product, as well as the width of the safe door, remember that the door opens 180° to allow access to the contents.

### ANCHORING OF SAFE

All products have one fixing point in the bottom for anchoring with the exception of Grade 5 and all double door products, which have two points in the bottom. Alternatively it is possible to anchor through the rear wall but this must be done by a professional safe installer or authorised service organisation.

#### Anchoring procedure:

- Place the safe in location and check the functionality of the safe by opening its door.
- Anchoring bolts M16×150 mm are required for fixing. Use only anchoring bolts with a minimum tensile strength of 700 N/mm<sup>2</sup>.
- Using an electric drill with an impact effect and 16 mm concrete bit, start drilling the hole through the fixing point. The floor should be drilled to a minimum depth of 120mm or 125mm for a Grade 5 safe. The minimum strength of concrete floor should be 25 MPa.
- Remove the dust from the hole using a vacuum cleaner or similar.
- Check to ensure that total depth of the hole is sufficient to allow for the bolt head to be recessed – see the diagram below.
- Insert the segment bolt into the hole with light blows of a hammer. The nut must be screwed on top of the bolt so that the hammer touches it and does not damage the threads.
- Tighten the nut to a 100 Nm. Anchoring is then complete.

#### **Warning**

If, due to the building's construction or other specific circumstances, it is not possible to use the bolt supplied, the alternative anchoring material must meet the following requirements: Tensile strength of screw min. 700N/mm<sup>2</sup>; Diameter of screw min.M16; Diameter of washers min. (mm) D17/D30x3.

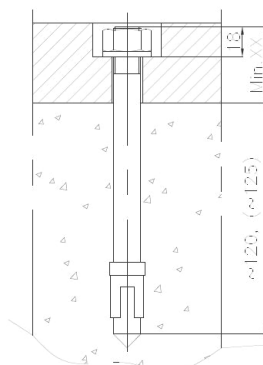
**In order to fulfil requirements of the EN Certification all safes below 1000KG safe must be anchored to a concrete floor or concrete wall .**

**NB, Should you choose to use any fixing method other than those specified as part of the EN test then it is advised to consult with your insurer.**

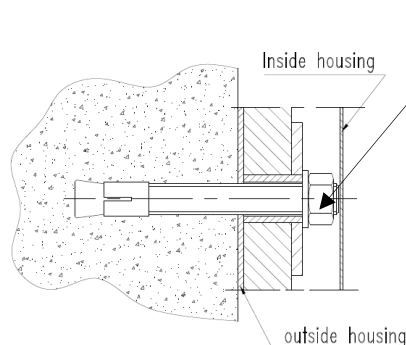
Once the safe has been anchored it should be stable, if the above instructions are not complied with the safe may be unstable and it is possible that the safe may tip forward when the door is opened.

#### Cable hole:

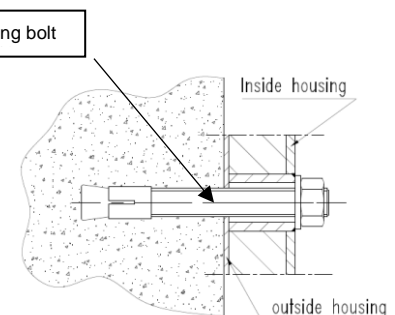
Cable hole Ø9 (through safe back wall) must be plugged if not used.



Anchoring through the bottom



Anchoring through the rear wall  
Model Grade 0, 1 & 2



Anchoring through the rear wall  
Model Grade 3 and 4

## OPENING AND LOCKING THE PRODUCT

Standard locking: Grades 0-3 are supplied with 1 key lock and 2 keys, Grades 4 and 5 are supplied with 1 key lock with 2 keys and 1 mechanical combination lock as standard. The operating instructions for the mechanical combination lock are separately included in the safe. If electronic combination lock/(s) are fitted the instructions will also be supplied separately in the safe.

### Unlocking and opening the door Grades 0, 1, 2 & 3:

- Push or lift the keyhole cover until the keyhole access is fully open.
- Insert the key in to the hole in such a way that the longer part of the key bit is downwards - push key fully in.
- Turn the key in clockwise direction by about one half of a turn and the lock opens. In this position it is impossible to remove the key from the hole.
- When the lock is open turn the handle upwards in a clockwise direction by about quarter of a turn and open the safe by pulling the door towards you.

### Unlocking and opening the door Grades Grade 4:

- Open the mechanical combination lock or electronic combination lock **first** in accordance with the separate instructions supplied.
- Push or lift the keyhole cover until the keyhole access is fully open.
- Insert the key in to the keyhole in such a way that the longer part of the key bit is downwards - push key fully in.
- Turn the key in clockwise direction by about one half of a turn and the lock opens. In this position it is impossible to pull the key from the keyhole.
- When the lock is open turn the handle upwards in a clockwise direction by about quarter of a turn and open the safe by pulling the door towards you.

### Unlocking and opening the door Grade 5:

- Open the mechanical combination lock or electronic combination lock **first** in accordance with the separate instructions supplied.
- Pull the locking plug from the key cover.
- Insert the key in to the hole in such a way that the longer part of the key bit is downwards - push key fully in.
- Turn the key in a clockwise direction about one half of a turn and the lock opens. In this position it is impossible to pull the key from the keyhole.
- When the lock is open, push the handle upwards in a clockwise direction by about quarter of a turn and open the safe by pulling the door towards you.

### Closing the door and locking Grades 0, 1, 2 & 3:

- First close the door, turning the handle about a quarter of a turn in an anti-clockwise direction to the closed position.
- Lock the key-lock by turning the key in anti-clockwise direction by about one half of a turn, so that the key can be removed. The safe is locked.

### Closing the door and locking Grade 4:

- First close the door, turning the handle about a quarter of a turn in an anti-clockwise direction to the closed position.
- Lock the key-lock by turning the key in anti-clockwise direction by about one half of a turn, so that the key can be removed.
- Turn the knob of the mechanical combination in a counter clockwise direction one turn. The safe is locked.

### Closing the door and locking Grade 5:

- First close the door, turning the handle about a quarter of a turn in an anti-clockwise direction to the closed position.
- Lock the key-lock by turning the key in anti-clockwise direction by about one half of a turn, so that the key can be removed.
- The locking plug must be put into the key cover at this point.
- Turn the knob of the mechanical combination lock in anti-clockwise direction one turn. Check: the locking plug cannot be pull out! The safe is locked.

### **Important warning:**

After finishing the closing/locking procedure – do not leave the key in the lock of the door

### **Electronic lock - Important warning**

The electronic lock is set with factory code when supplied. For security reasons **it is important to change the factory set code to your own personal code prior to use**. Do not use any personal or other similarly well-known data when selecting a code.

Grades 3, 4 and 5 have the ability to have an additional electronic security device fitted to the safe.

## MAINTENANCE

Regular maintenance will ensure the safe operates correctly. The following procedures should be carried out at 12 monthly intervals:

- Open and close the locks and bolt work.
- Turn the handle to engage the bolt work.
- Fully open the safe door to its end position.
- Lubricate the door hinges through the lubrication points on the hinges.

### **Warning**

Never lubricate the key lock or the combination lock with oil.

Should the safe be attacked by attempted forced entry or suffer fire damage please check with your insurers as to the position on repairs and servicing which should be carried out by authorised personnel/safe engineers, if not carried out correctly your certification may be invalidated.