

**Smart Access Locking Technology - The Main Points**

- The AC Leigh Salto system offers the complete flexibility and control of a fully wired access system without the huge price tag or major disruption caused by hard wiring for a standard system. Salto stand-alone battery powered units (take standard AAA batteries which can last around 3 years) can be used in the same system as wired units making installation quick and simple. The Salto access system is compatible with most existing hardware allowing the use of existing locks and doors.
- Salto units are operated by proximity cards, iButton fobs or smart cards which can be individually programmed to allow different levels of access. For example, the premises' manager may have access to every room in the building, staff can only access the rooms they work in, visitors can only enter rooms they have been pre-authorised to enter. This allows the building to be divided into zones, permissions of access to those zones completely flexible, and is easily managed on-site by the authorised staff member.
- Keys can be allocated a 'valid time'. For example, maintenance workers may only have access to the room they are working in between 7.30am and 12pm, after this period the key will not operate the lock, preventing unauthorised access. The lock units themselves can be programmed to lock

and unlock at preset times. This is useful for doors which maybe inconveniently placed or need to be locked/unlocked at inconvenient times.

- Lost or stolen keys are easily removed from the system, no need for costly operations such as changing locks or cutting new keys. Once a fob or card has been removed from the system it will not operate any of the locks.
- Using wall readers the Salto system can operate automatic doors, car-park barriers, gates, lifts etc.
- The Salto system keeps an audit trail of the last 1000 uses.
- The Salto system is ideal for schools & colleges, offices & commercial environments, hotels & guest houses. It can manage up to 60,000 users and be installed on as little as one door. Many projects continually extend their salto system gradually increasing the number of doors managed by the system.

The Salto system is available to view at your local branch. If you would like a free demonstration of the technology, at a place and time to suit you, please contact our sales department.  
AC Leigh can supply and install systems for you.



**The Salto Virtual Network**

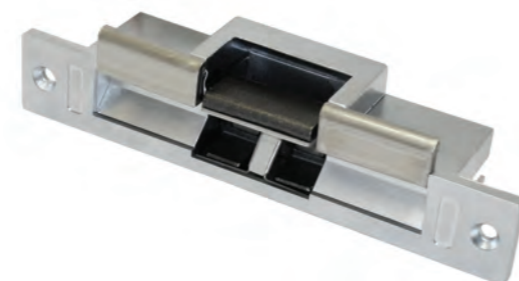
- The Salto virtual network is unique to the Salto access system. It allows all the control of a fully wired system without all the hassle associated with hardwiring every door.
- Information is passed from a PC running the salto software to an online wall reader (usually on an entrance door). The wall reader then passes the information to the card when it is used. The card carries all the access information needed to update each wire-free lock when it is used.
- The locks then download the audit trail and lock status to the card. The card passes the data to the wall reader when it is used. The wall reader updates the software.
- For further information take a look at our Salto Access control website - [www.acleigh-access.co.uk](http://www.acleigh-access.co.uk)  
Free demonstrations of the Virtual Network are available on request.



### Electric Release for Deadbolt

Access Control Items  
 • Standard ANSI, available in fail secure and fail safe. The deadbolt releases include monitoring as standard.  
 HELP! If you need any help in choosing the correct item our trained staff will be able to advise you.

Product Title	Code
DBR-310FL Fail Secure Electric Strike Deadbolt Release	XB010025
DBR-310FS Fail Safe Electric Strike Deadbolt Release	XB010020



### Reversible Mortice Strike

• Reversible and versatile mortice strike.  
 • Monitored version available.  
 HELP! If you need any help in choosing the correct item our trained staff will be able to advise you.

Product Title	Code
Reversible mortice strike 12v dc	XB012780
Reversible mortice strike 12v dc (Monitored)	XB012790



### Self aligning shearlock

Access Control Items  
 • Self aligning shearlock, ideal for swing-through doors as well as single action doors.  
 • The magnet is constantly powered and 'looking' for the armature. Once the armature starts to come into line with the magnet it is attracted upward and snaps into position once the alignment is correct.  
 • 1500KG holding force.  
 HELP! If you need any help in choosing the correct item our trained staff will be able to advise you.

Product Title	Code
CSL-30 Self aligning shearlock 12/24v ac	XB010850



### High Quality Surface Mounted Electromagnetic Lock - Double

Access Control Items  
 • SD300 - 300kg holding force, SD500 - 500kg holding force.  
 HELP! If you need any help in choosing the correct item our trained staff will be able to advise you.

Product Title	Code
SD300 Double Electro Magnet	XB012190
SD500 double standard magnet	XB012200



### High Quality Surface Mounted Electromagnetic Lock

• Single Electro Magnetic Lock.  
 • Holding force - S300=300kg S500=500kg.  
 HELP! If you need any help in choosing the correct item our trained staff will be able to advise you.

Product Title	Code
S300 12/24v DC Electro Magnet 253x46x27	XB012150
S500 monitored standard magnet	XB010010



### Z' & 'L' Shaped Brackets

Access Control Items  
 HELP! If you need any help in choosing the correct item our trained staff will be able to advise you.

Product Title	Code
300ZL Z & L Kit for 300 Series Magnets	XB010150
500ZL Z & L kit for S500 magnets	XB010200



### Euro Style Release

Access Control Items  
 • Fail Secure Kit, includes, release body, surface rim case and a mortice plate. Suppressor fitted internally as standard.  
 HELP! If you need any help in choosing the correct item our trained staff will be able to advise you.

Product Title	Code
GAER Fail Secure 12VAC/DC (adj Jaw) Strik	XB012900



### Galeo Vandal Resistant Keypad

Access Control Items  
 • Modern Styling with blue backlight  
 • Vandal Resistant  
 • Backlit Keypad manages 100 users with remote electronics for high security applications.  
 HELP! If you need any help in choosing the correct item our trained staff will be able to advise you.

Product Title	Code
Galeo Vandal Resist Keypad 110x75x15mm	XB011842



### Entry Level Keypad

Access Control Items  
 • Controls 100 users.  
 • LED & audible Indication  
 • Programmed via mastercode  
 • Includes exit button input and timed relay output  
 HELP! If you need any help in choosing the correct item our trained staff will be able to advise you.

Product Title	Code
Promi-Eco Keypad (100 user) 12v AC/DC	XB010035



### 4" Round Access Switch

Access Control Items  
 • Suitable to comply with DDA.  
 • Disabled Logo and "Push to open".  
 HELP! If you need any help in choosing the correct item our trained staff will be able to advise you.

Product Title	Code
CM-41/4 SS 100mm Dia Disabled + PTO Exit But	XB010040



### Push-to-Exit button

Access Control Items  
 HELP! If you need any help in choosing the correct item our trained staff will be able to advise you.

Product Title	Code
RTE/SS/SFD S/steel exit button green dome flush fitting	XB011970
RTE002S Surface mounted plastic architrave exit switch	XB012030



### Narrow Access Switch

Access Control Items  
 • Suitable to comply with DDA.  
 • Disabled Logo and "Push to open".  
 HELP! If you need any help in choosing the correct item our trained staff will be able to advise you.

Product Title	Code
CM-25/4 narrow switch +logo + push	XB010650



### 1-Way Audio Entry Kit

**Access Control Items**

- Easy Installation
- Entry Level 1-way audio entry system, comprising; narrow cast aluminium door station, handset, power supply, rainshield & corner mount fixing post.
- It is necessary to install a separate power supply with relay for the lock release. 'XB012640 & XB012968'

HELP! If you need any help in choosing the correct item our trained staff will be able to advise you.

Product Title	Code
MOD-1-S Surface Mounted Modular 1 Way System	XB014055
ECAE-1-S Surface Mounted 1 way Audio entry system complete	XB014050

### Self Contained Proximity Reader

**Access Control Items**

- Controls 500 Users.
- LED & audible Indication
- Programmed via mastercode
- Includes exit button input and timed relay output

HELP! If you need any help in choosing the correct item our trained staff will be able to advise you.

Product Title	Code
PROMI-500 Standalone Prox Reader12v ac/dc	XB011850

### Proximity Fob

**Access Control Items**

HELP! If you need any help in choosing the correct item our trained staff will be able to advise you.

Product Title	Code
BP-PG Grey Prox Key Fob	XB010370



### 4-Wire Video Entry System

**Access Control Items**

- Complete 4 wire video entry system.

HELP! If you need any help in choosing the correct item our trained staff will be able to advise you.

Product Title	Code
VRVE-F-4 stainless flush 1-way kit 4-wire	XB012670
VRVE-S-4 stainless surface 1-way kit 4-wire	XB012690



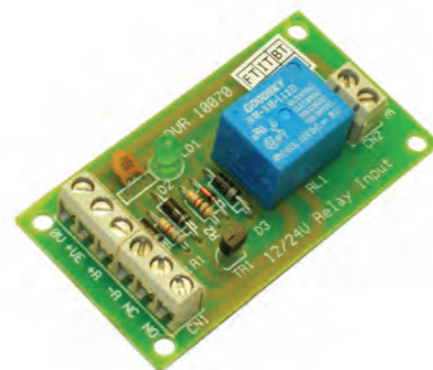
### 12v AC/DC Relay

**Access Control Items**

- Necessary for use with a lock release in conjunction with the 1-way Kit 'XB014050 & XB014030'

HELP! If you need any help in choosing the correct item our trained staff will be able to advise you.

Product Title	Code
VHLR 12v AC/DC Relay	XB012640



### DC Power Supply

**Access Control Items**

- 12v DC Power supplies for 1.0A-2.0A application. Units have charging circuits for standby batteries, supplied in metal cases with LED indication.
- HELP! If you need any help in choosing the correct item our trained staff will be able to advise you.

Product Title	Code
PSU12/1 12v DC 1A StandardMetal case	XB014010
PSU12/2 12v DC 2A standard metal case	XB014210



### Rechargeable Batteries

**Access Control Items**

- Ensure system operation in case of mains failure.

HELP! If you need any help in choosing the correct item our trained staff will be able to advise you.

Product Title	Code
SL1223 12vdc 2.3AH Battery	XB013020
SL1250 12vdc 5.0AH Battery	XB013030
SL1275 12vdc 7.5AH Battery	XB013040



### 12v DC Plug-in Power Supply

**Access Control Items**

- Necessary for use with a lock release in conjunction with the 1-way Kit 'XB014050 & XB014030'

HELP! If you need any help in choosing the correct item our trained staff will be able to advise you.

Product Title	Code
"RF1A 12v dc 1.0amp "plug in" PSU"	XB012968



### 30cm Door Loop

**Access Control Items**

- Cable management, tidies cables from frame to door leaf.
- Please Note: This door loop has square ends, not shown.

HELP! If you need any help in choosing the correct item our trained staff will be able to advise you.

Product Title	Code
FM door loop 30cm Square Aluminium Ends	XB011280

### Armoured Door Loop

**Access Control Items**

- Cable management, tidies cables from frame to door leaf.
- Protects cables from vandals.

HELP! If you need any help in choosing the correct item our trained staff will be able to advise you.

Product Title	Code
ADL Armoured Door Loop 60cm	XB010220

### Stand-alone Fingerprint Reader



**Access Control Items**

- Stand-alone Fingerprint reader with one relay for connection to one door or electrical device
- Operates an electrical locking device i.e. electric strike, electro magnet.
- Dimensions: External Unit 60x95x55mm, Internal Unit 140x128x48mm
- Up to 99 (individual fingerprints) Users.
- No computer required.

Available to view at your local store.

<b>Product Title</b>	<b>Code</b>
Toca Access Light Fingerprint reader	XA030010

### Locca Push Button Remote Access



**Access Control Items**

- Requires no electrical expertise to fit, pre-wired and programmed with a plug-in transformer included.
- Ideal for the physically impaired, designed to be easily operated by those with sight and movement problems.
- Uses secure and proven rolling code technology as used in premium motor vehicles.
- Locks automatically after a pre-set period.

Available to view at your local store.  
Requires an electric release and rim lock to operate.

<b>Product Title</b>	<b>Code</b>
Locca remote locking unit	XA020010

### FREE! FULL RANGE CATALOGUE

**Access Control Items**

- AC Leigh offer a comprehensive range of access control products. Order your full AC Leigh Access Control Catalogue now.



### AC Leigh Automatic Door Operators - DDA Solution

AC Leigh can offer a wide range of solutions to meet the requirements of the DDA; electro hold-open/free swing door closers, low energy and fully automatic swing door operators all allowing barrier-free access. Expert advice is always on hand to ensure compliance with safety standards such as BS7036,

and long term reliability is assured by our range of competitively priced maintenance packages. With the disability act now in force those involved in the construction industry are responsible for ensuring entrances are accessible to all.

**Slimdrive Family**

The Slimdrive product range comprises automatic door systems for side hung doors and sliding doors, including telescopic and circular sliding doors as well as folding doors. The extremely slim drive makes it possible for the designer and architect to locate the drives so that they are nearly invisible in the elevation.

**EMD/EMD-F**

The Slimdrive EMD is an electromechanical drive system for hinged doors which – like all products in the Slimdrive range it manages to do its job with a construction height of just 7cm.



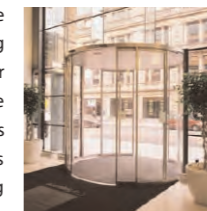
This makes the Slimdrive EMD particularly suitable for installation on narrow profiles and in situations where space is at a premium. The EMD-F is a highly compact operator; it will move large and heavy internal and external doors easily and with virtually no noise. Low energy function available.

**SL**

The SL hides the powerful drive system for automatic sliding doors in only 7cm, which fits elegantly into each straight façade and therefore makes room for your own design.

**SC/SCR - Curved door operator**

The advantage of a curved sliding door fills the viewer with enthusiasm at first sight. A new feeling of space dominates the entrance area. The door geometry becomes more appealing; the slim profile system with fine-framed laminated safety glass contributes to the elegant impression and makes the glass surfaces even more spacious. Astonishing versatility, simple operation, simple installation properties and an extraordinarily maintenance-friendly – the fully digital of Slimdrive SC/SCR has many advantages.



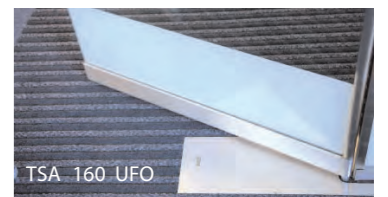
Due to the overall operator height of only 7cm, the drive can be mounted almost invisibly to the lintel, in the suspended ceiling or directly below the ceiling.

**TSA 160 (pictured bottom right)**

Where it is cumbersome to operate a door by hand, the swing door system TSA 160 is the perfect solution. This provides particular benefits in shops, department stores, hospitals, schools and in homes for the elderly or disabled, as well as in airports and railway stations. An additional safety feature are the GEZE safety sensors, which control the action of opening and closing. These sensors will stop the movement of the door in time if people, animals or moveable objects are within the swing of the door.

**TSA 160 UFO (Under Floor Operator)**

The GEZE UFO has been developed from our highly respected TSA 160 transom mounted unit. Its position under the floor allows for maximum transparency thus achieving architectural beauty with the highest degree of



functionality. The UFO electro-hydraulic operator is housed within a sealed stainless steel enclosure mounted below finished floor level; incorporating an advanced direct drive for use with all designs of swing doors. Due to the UFO's technology it can easily be installed to assist in compliance with the safety requirements of BS7036. Full compliance with BS8300 and the stringent requirements of the DDA are achieved invisibly



Why not combine your Automatic door with the salto access system? See page ...

Geze TSA 160

